



## Contact Us:

Main office (Administration and Financing):  
Ruko Grand Cemara Blok U6/12 Komp.  
Harapan Indah, Bekasi Barat, Jawa Barat -  
Indonesia  
Tel: (021) 887 3691  
021) 887 3435  
Fax: (021) 887 3235  
Email: [sri\\_intan\\_perkasa\\_pt@yahoo.co.id](mailto:sri_intan_perkasa_pt@yahoo.co.id)

Second Office: (Ukes, Gudang dan Workshop)  
Ruko Harapan Indah Blok EN no 7,8, dan 15  
Komp. Harapan Indah, Bekasi Barat, Jawa  
Barat - Indonesia  
Tel: (021) 8898 4397  
Fax: (021) 887 3235  
Email: [sriintanukes@gmail.com](mailto:sriintanukes@gmail.com)

Website:  
[sriintanperkasa.com](http://sriintanperkasa.com)

## Fuji Film Drypix Smart

Fuji Medical Dry Laser Imager

Cooperated with Fujifilm Indonesia



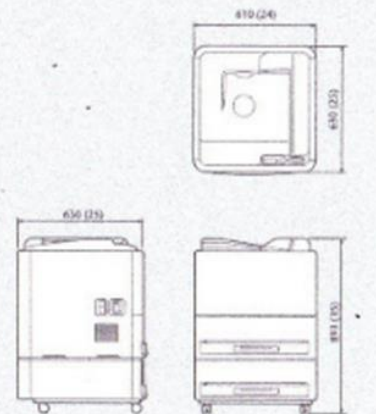
System Configuration



DRYPIX Smart Specifications

<b>Standard Components</b>	Fuji MEDICAL Dry Laser Imager DRYPIX Smart (Model: DRYPIX 6000)
<b>Recording method</b>	Laser exposure (thermal development system)
<b>Applicable film</b>	Fuji Medical Dry Imaging Films DF-HL (Blue base)    DF-ML (Blue base) 35 x 43 cm (14" x 17")    26 x 36 cm (10" x 14") 35 x 35 cm (14" x 14")    25 x 30 cm (10" x 12") 26 x 36 cm (10" x 14")    20 x 25 cm (8" x 10") 25 x 30 cm (10" x 12") 20 x 25 cm (8" x 10")
<b>Film loading</b>	Daylight film loading
<b>Film Tray</b>	2 trays (5 sizes of film are available by changing film trays)
<b>Processing capacity</b>	Approx. 80 sheets/hour 35 x 43 cm (14" x 17")
<b>Pixel size</b>	50 µm (508 dpi)/100 µm (254 dpi)
<b>Recording gradation</b>	14 bits
<b>Image memory</b>	1GB
<b>Density adjustment</b>	Automatic
<b>Input channel</b>	DICOM network input = 1 channel only
<b>Dimensions (W x D x H)</b>	610 x 630 x 893 mm (24" x 25" x 35")
<b>Weight</b>	104 kg (229.3 lbs.)
<b>Power Supply Conditions</b>	Input voltage: AC100-240V Single phase Frequency: 50-60Hz
<b>Environmental Conditions</b>	Operating Conditions: • Temperature: 15-36°C • Humidity: 40-70%RH (at 15°C) to 15-70%RH (at 30°C) (No dew condensation)

Dimensions



Dry Imager

DRYPIX Smart **NEW**

FUJI MEDICAL DRY LASER IMAGER

**DRYPIX**  
Smart Model: DRYPIX 6000

Highly efficient dry imager quickly offering excellent quality images for wider purposes





## The most advanced DRYPIX has arrived, assisting smooth diagnoses

DRYPIX Smart, backed by Fujifilm's extensive experience in dry imaging, always delivers superior quality images to satisfy various needs of multi-department hospitals. Despite its compact size, enabling use anywhere in a medical facility, throughput is extremely high with no compromise on image quality.

### Compact and highly efficient

#### High throughput

DRYPIX Smart boasts a world-class high throughput speed of 80 sheets per hour with 14" x 17" film. It will help reduce the patient's waiting time and greatly increase the efficiency of examination workflow.

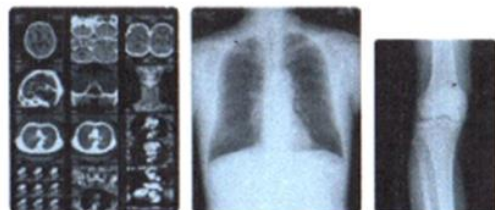
#### Two trays to achieve more versatility

The DRYPIX Smart accommodates multiple film sizes. It is equipped with two universal film trays which enable printing on two different film sizes at the same time.



#### Fuji Medical Dry Imaging Film

The high quality DI-HL and DI-ML films contribute to producing clear images on the DRYPIX Smart. These films have a neutral color tone that produce images comparable to those made by wet processing.



35 x 43 (14" x 17")

35 x 43 (14" x 17")

26 x 36

2 trays

Throughput  
**80** sheets/hr.

\*with 14" x 17" film

Applicable for  
mammography  
(508 dpi)

### High quality images for more versatility

#### High resolution and high maximum density

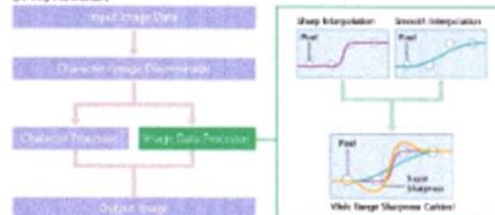
Offering high resolution of 508 dpi and a maximum density of 4.0\*, the DRYPIX Smart is ideal for mammography which requires high definition images.

\*When the DI-HL film is used

#### Image processing engine which provides high-quality images

Advanced Variable Response (A-VR) Spline Interpolation Fujifilm's A-VR automatically detects and distinguishes between image data and alphanumeric characters, ensuring clear, sharp alphanumeric characters even when noisy images require smooth interpolation of image data. Benefits include easier, faster and more accurate diagnosis.

#### (A-VR) Flowchart



#### Quality Control

DRYPIX Smart prints a 24-step grayscale pattern to film, and then measures its density. This feedback system allows precise and subtle image adjustments (FDC: Auto Film Density Correction) to be made. Several kinds of test pattern images for the QC of mammograms are incorporated into DRYPIX Smart.



#### SAR (Smooth Curve Arranging)

Smooth Curve Arranging (SAR) on DRYPIX not only offers the most suitable image tones for modalities such as CT and MR, but also allows adjustment of the tones to best match the diagnostic needs of individual patients. What's more, LUT also carries information on a wide range of modalities from different manufacturers to enable precise matching of image tone to specific modality.

